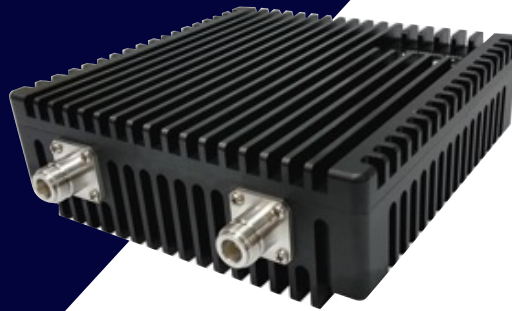


hypha MESH: NODE 2W

For vehicle, building
and base camp
installation.

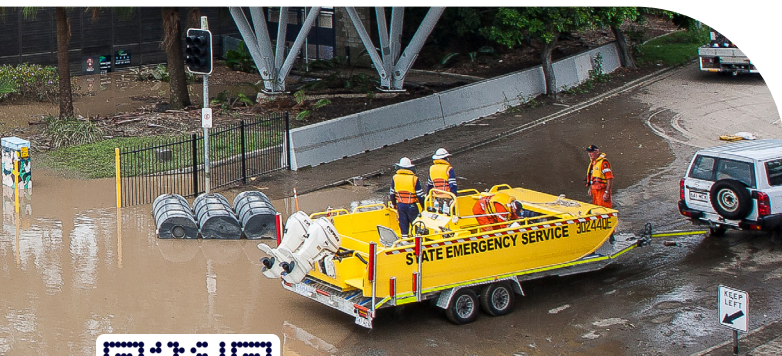


- ✓ Ideal for static locations where more power is required to extend the range of your mesh network.
- ✓ Can be configured for different power levels, to deliver significant network coverage across a wide area.
- ✓ IP68 rated for the toughest environments – including high levels of dust and water resistance.

Specifications

FORM FACTOR	Fixed / Portable / Vehicle
OPERATING FREQUENCY (GHZ) (Other frequencies available)	Programmable 4.8 > 5.0
BANDWIDTH (MHZ)	1.25 / 2.5 / 5 / 10 / 20
DATA RATE (MBPS)	Up to 100*
TRANSMIT POWER	2 x 2 W
RECEIVE SENSITIVITY	< -100 dBm @ 5 MHz
POWER SUPPLY	28 – 36 V DC
POWER CONSUMPTION	9 W (Standby), 30 W (Max)
ETHERNET	10 / 100 Mbps
ENCRYPTION	AES 128 / 256
RF INTERFACE	N-Type x 2 (Tx/Rx)
GPS	External (RS232/GPS)
AUDIO	AMR 4.8 kbps
CONTROL	Ethernet & OTA, On/Off Button
I/O	RS232
WEIGHT	1.55 kg
DIMENSIONS (MM)	180 × 170 × 65
IP RATING	IP68
OPERATING TEMP (°C)	-20 to 50
ADVANCED FEATURES*	<ul style="list-style-type: none">• Up to 128 nodes in a network• Mimo mode• STDMA mode• Smart auto mode (anti-jamming)

* Licensable feature



How
Hypha
works

info@hypha.world | hypha.world   
+61 7 2000 4111 | 36 Fienta Place, Darra, QLD 4076 Australia



Voice and Data **Beyond** Networks