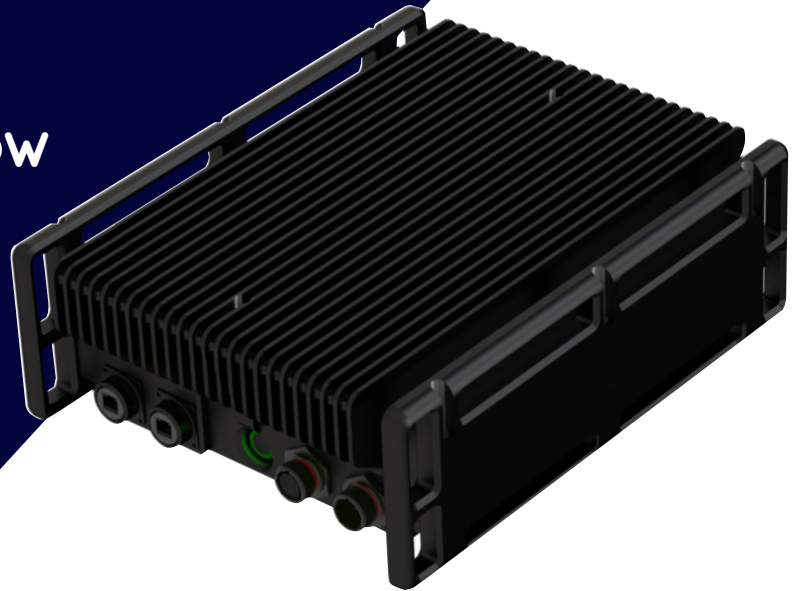


# hypha MESH: NODE 10W

For vehicle, building  
and base camp  
installation.



- ✓ Ideal for static locations where more power is required to extend the range of your mesh network.
- ✓ Can be configured for different power levels, to deliver significant network coverage across a wide area.
- ✓ IP68 rated for the toughest environments – including high levels of dust and water resistance.



How  
Hypha  
works

info@hypha.world | [hypha.world](https://hypha.world)     
+61 7 2000 4111 | 36 Fienta Place, Darra, QLD 4076 Australia

## Specifications

FORM FACTOR	Fixed / Vehicle
OPERATING FREQUENCY (GHZ) (Other frequencies available)	Programmable 1.1 > 1.5 / 4.8 > 5.0
BANDWIDTH (MHZ)	1.25 / 2.5 / 5 / 10 / 20 / 40
DATA RATE (MBPS)	Up to 180*
TRANSMIT POWER	2 x 10 W
RECEIVE SENSITIVITY	< -100 dBm @ 5 MHz
POWER SUPPLY	28-36 V DC
POWER CONSUMPTION	28 W (Standby), 120 W (Max)
ETHERNET	10 / 100 / 1,000 Mbps
ENCRYPTION	AES 128 / 256
RF INTERFACE	2 x N-Type (Tx/Rx), 1 x TNC (GPS)
GPS	TNC (GPS)
AUDIO	AMR 4.8 kbps
CONTROL	Ethernet & OTA, On/Off Button
I/O	RS232
WEIGHT	12 kg
DIMENSIONS (MM)	314 × 385 × 154
IP RATING	IP68
OPERATING TEMP (°C)	-40 to 50
ADVANCED FEATURES*	<ul style="list-style-type: none"><li>• Up to 128 nodes in a network</li><li>• Mimo mode</li><li>• STDMA mode</li><li>• Smart auto mode (anti-jamming)</li></ul>

\* Licensable feature



Voice and Data **Beyond** Networks